

Biotin Anti-Human HLA-A,B,C Monoclonal Antibody



天津三箭生物技术股份有限公司
Tianjin Sungene Biotech Co., Ltd.
精准 高效 稳定 Precision Efficient Stable

| Catalog Number | Vial Size |
|----------------|-----------|
| H100H2-08A | 25 µg |
| H100H2-08C | 100 µg |

Market | 400-621-0003
marketing@sungenebiotech.com

Support | 022-66211636-8024
techsupport@sungenebiotech.com

Web | www.sungenebiotech.com

Important Note: Centrifuge before opening to ensure complete recovery of vial contents.
This product is guaranteed up to one year from purchase.

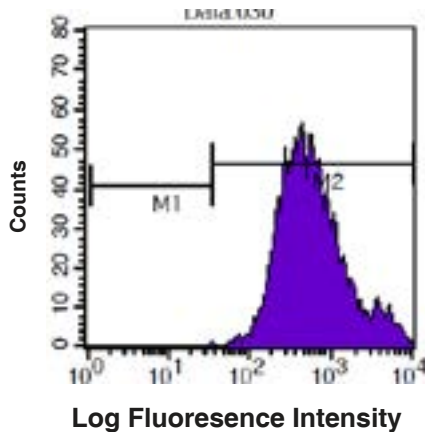
Purified Antibody Characterization

| Clone | Isotype | Reactivity |
|-------|-------------|------------|
| W6/32 | Mouse IgG2a | Human |

Description

MHC class I antigens associated with β 2-microglobulin are expressed by all human nucleated cells. MHC class I molecules are involved in presentation of antigens to CD8⁺ T cells. They play an important role in cell-mediated immune responses and tumor surveillance.

Illustration of Immunofluorescent Staining



Human peripheral blood lymphocytes
stained with BIOT anti-human HLA-
A,B,C

Product Information

Conjugation: Biotin

Formulation: PBS pH 7.2, 0.09% NaN₃, 0.2% BSA

Storage: Keep as concentrated solution. Store at 4°C and protected from prolonged exposure to light. **Do not freeze.**

Application: Recommended Application: FC

Usage: Each lot of this antibody is quality control tested by immunofluorescent staining with flow cytometric analysis (The amount of the reagent is suggested to be used 0.25 µg per 100 µL of peripheral blood. Please check your vial). Since applications vary, the appropriate dilutions must be determined for individual use.

References

- [1] Darrow TL, et al. 1989. J. Immunol. 142:3329.
- [2] Stern P, et al. 1987. J. Immunol. 138:1088.
- [3] Tran TM, et al. 2001. Immunogenetics 53:440.
- [4] Barbatis C, et al. 1981. Gut 22:985.
- [5] Ayyoub M, et al. 2004. Cancer Immunity 4:7.
- [6] Yoshino N, et al. 2000. Exp. Anim. (Tokyo) 49:97.
- [7] Vambutas A, et al. 2000. Clin. Diagn. Lab. Immun. 7:79

For Research Use Only.